

4.2 Local Standards Framework

Project description:

Enabling the local community to shape the local standards for all new affordable homes built in the town and surrounding villages.

Objectives:

Within the framework of the new Localism Bill there are opportunities to set up and influence a Local Standards Framework covering issues like:

- Space standards (inside and outside)
- Density
- Materials
- Community provision & services
- Energy performance and controls
- Ongoing management and maintenance
- Promotion of self build, in line with recent Government policy

Key actions:

- Engage with officers of South Hams District Council, the Homes & Communities Agency (HCA), the Royal Town Planning Institute (RTPI) and local housing associations to agree the scope of the framework.
- Check the Housing Needs Survey for Kingsbridge is up to date; if not arrange for a new one with the Community Council for Devon.
- Draft the local framework and seek approval/ endorsement from SHDC and the HCA
- Publish and promote the framework to local developers, house builders and all those in need of affordable homes.
- Target developers (local and otherwise) planning to build the planned new 500 homes.

Progress to date:

Preliminary enquiries have been made.

Potential impact on carbon reduction:

Homes that are built will have significantly less embodied energy and carbon emissions. The designs will also be tailored to the needs of the local community.

Suggested ownership:

Town Council, SHDC, HCA and local housing associations

Possible sources of funding:

HCA, SHDC

35/49

4.3 Design and Planning Advisory Group

Project description:

Set up an advisory group of local professionals, communicators and lay people to promote better quality and sustainable design in and around the town. The panel will be similar to the district-wide Planning and Conservation Panel hosted by SHDC and other councils throughout the country.

Objectives:

- To promote and communicate a broader understanding of building design and planning issues. This will involve a combination of targeted briefings on the design process and quality issues (such as Building for Life www.buildingforlife.org)
- The group will provide a resource for elected members of the Town Council to draw on when considering planning applications.

Key actions:

- Invite applications for membership of the panel - possibly from the Community Forum.
- Agree a chairman - most likely to be a member of the Town Council.
- Agree terms of reference and protocols.
- Arrange design training events for members - possibly with CABE-Design Council and Creating Excellence.
- Set up the panel.

Progress to date:

Preliminary discussions only.

Potential impact on carbon reduction:

Better quality and sustainable buildings, where carbon reduction measures will be promoted as part of the process - such as integrating renewable energy systems and energy conserving buildings.

Suggested ownership:

Kingsbridge Town Council, South Hams Society, Women's Institute, South Hams District Council, Local Architects, Engineers, Surveyors, other design professionals and community groups.

Possible sources of funding:

Department for Communities and Local Government (DCLG) - Supporting Communities and Neighbourhood Planning Fund, KTC, SHDC

36/49

4.4 Promotion of energy efficiency in new & existing homes

Project description:

Encourage energy saving & efficiency, and the adoption of renewable energy solutions in new and existing buildings

Objectives:

- Encourage measures to insulate homes/workplaces and install energy efficient appliances.
- Promote Renewable Energy generation - solar, wind, hydro-electric, biomass & heat pumps.
- Promote and enable a level of on-site renewables on new developments, including centralised/community systems

Key actions:

- Provision of impartial advice on suitable solutions (through Energy Action Devon and the South Devon Coastal Renewable Energy Network).
- A community demonstration project - Quay House.
- Identify a domestic demonstrator project - for example at Rack Park.
- Encourage the community to have their homes and work places audited.
- Promote the take-up of energy efficiency grants, the Feed In Tariff (FIT) for renewable energy generation (e.g. wind, solar), and the new Renewable Heat Incentive (RHI) for renewable heat generation (e.g. solar thermal, heat pumps, biomass).

Progress to date:

A proposal has been submitted to Kingsbridge Town Council by Energy Action Devon and the South Devon Coastal Renewable Energy Network (SCREN) to audit and propose energy saving measures and renewable energy options for Quay house. It is hoped that this process will be open to the community to understand the issues facing historic buildings.

Potential impact on carbon reduction:

All proposals will set out to reduce carbon and encourage the community to adopt more carbon reducing lifestyles.

Suggested ownership:

Kingsbridge Town Council, SHDC, SCREN, Energy Action Devon, Local builders, suppliers, schools, and community groups (including Saltstone Caring and Women's Institute)

Possible sources of funding:

South Devon Coastal Local Action Group (through SDCREN), Energy Action Devon, the Green Deal and the Green Bank

4.5 Local services directory

Project description:

A local directory of construction industry suppliers, manufacturers, consultants and other related services.

Note this project could form part of a broader service directory for Kingsbridge (see 3.5)

Objectives:

- To promote the local service industry.
- To encourage local investment in the service industry.
- To reinforce supply chains.
- To engender confidence in the renewables industry.
- To promote local best value.

Key actions:

- Engage suppliers and services.
- Engage with the Chamber of Commerce.
- Set up the format of the directory e.g. web based or a printed document.
- Define the categories of services.
- Establish the criteria for inclusion (e.g. accreditation, geographic location, commitment to carbon reduction).
- Establish membership arrangements (e.g. a subscription).
- Provide top tips for procuring services.

Progress to date:

None

Potential impact on carbon reduction:

Promotion of local services will reduce transport needs and procurement of carbon reducing products, services and actions.

Suggested ownership:

Kingsbridge Town Council, Kingsbridge Chamber of Commerce, Kingsbridge Information Centre, Local contractors, consultants and other service providers

Possible sources of funding:

South Devon Coastal Local Action Group

38/46

TASK

TOWARDS A SUSTAINABLE KINGSBRIDGE

CONTACT

For further information on any of the actions in the Sustainable Buildings section of this action plan, or to express an interest in getting involved, please contact:

Peter Sandover

Tel: 07967 145728

Email:

peter@sandoverassociates.co.uk

39/49

LOCAL

RESPONSIBLE

RESILIENT

COMMUNITY DRIVEN

Appendix 1

Report of discussions held with students of
Kingsbridge Community College (KCC).

Background

Members of the Kingsbridge Carbon Reduction Working Group held a series of discussions over February and March 2011 with student of KCC. We are very grateful to Jill Flintham (Design and Technology Teacher at KCC) for helping us and facilitating the process.

Discussions were held with the school's Eco Group and sixth formers during their Enrichment classes. Students were encouraged through discussions and exercises to think about Kingsbridge in the future and what they would like to see changed; making the town and surrounding countryside more sustainable.



KCC Postcards from the future

A series of common themes emerged that concerned and interested the students. Themes illustrated in the postcards they produced included:

- More sustainable transport
- Renewable energy
- More recycling
- A greener town

From these themes students were asked to think in more detail about the issues, impacts, actions and potential projects that could be developed by both the students and the community of Kingsbridge as a whole.

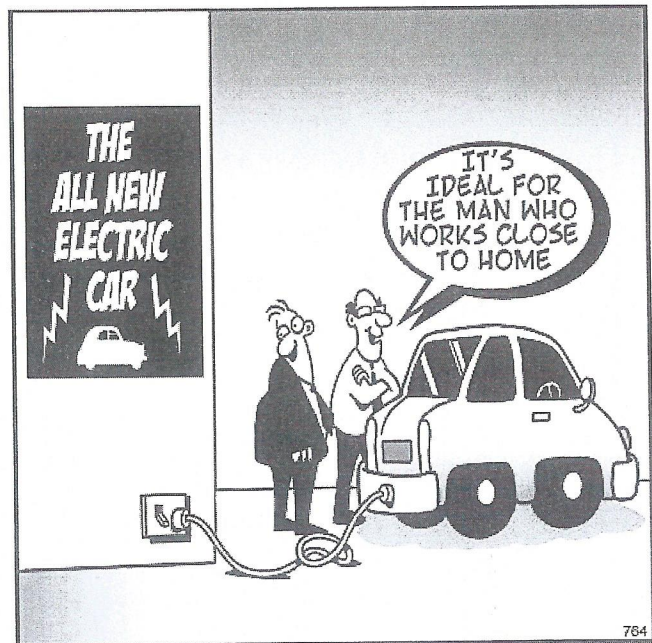
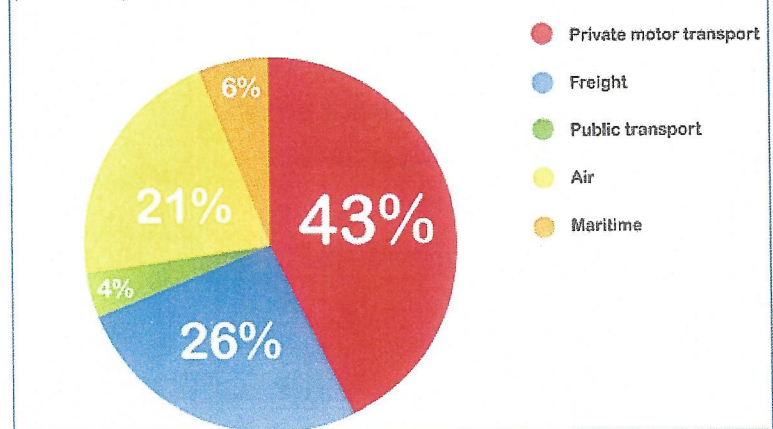
The following pages summarise the issues and actions raised:

41/49

Transport

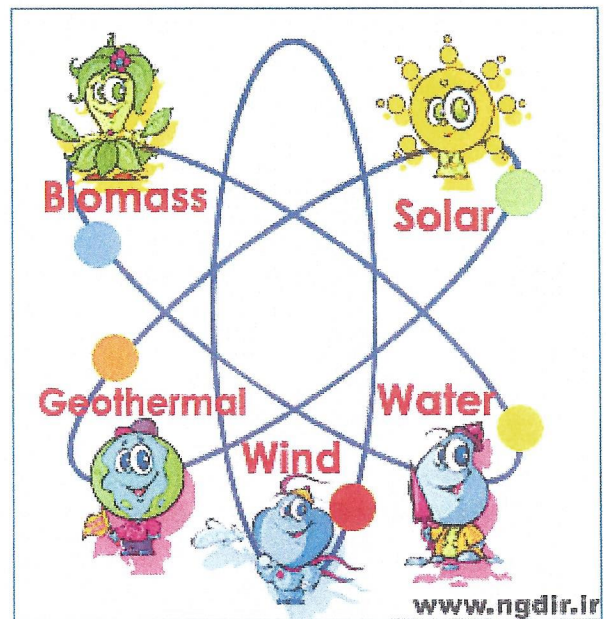
- More bike paths; make the town centre safer for cyclists
- Less cars
- Hitching stops
- More buses at greater frequency during the day and night
- Car sharing for young drivers
- One car per family
- A notice board advertising lifts
- Training young drivers to drive economically conserving fuel
- School leavers getting access to Wheels 2 Work
- School transport run on bio fuels
- Electric cars and buggies
- Solar powered car (students have already made a model from re-cycled coke bottles)
- Smart hybrid cars -petrol to go up hill and solar powered downhill-with lower road tax
- Cheaper taxis and buses for young people
- Trams
- Roller skates

Percentage of UK Transport Carbon Emissions (Including International)



Renewable energy (wind, solar and wave)

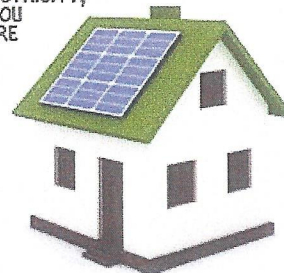
- Community wind turbine and heat pump projects
- A wind turbine for the school
- A ground source heat pump for the school using adjacent fields
- Solar panels
- More grants and sponsorship from big companies (e.g. Tesco, and Costa) for solar power
- Understand how the heat pumps and solar panels at KCC work
- Solar powered street lights
- Tidal and wave power
- Energy saving light bulbs in every public building and business
- Rainwater collection for flushing loos
- Advertise and promote the benefits of saving energy and carbon- also saving money.
- Better insulating windows



YOU GENERATE ELECTRICITY USING SOLAR PANELS, WIND TURBINES, ETC

YOU ARE PAID FOR EVERY UNIT OF ELECTRICITY WHICH YOU GENERATE...

...AND YOU CAN USE THAT ELECTRICITY, SAVING YOU EVEN MORE MONEY!

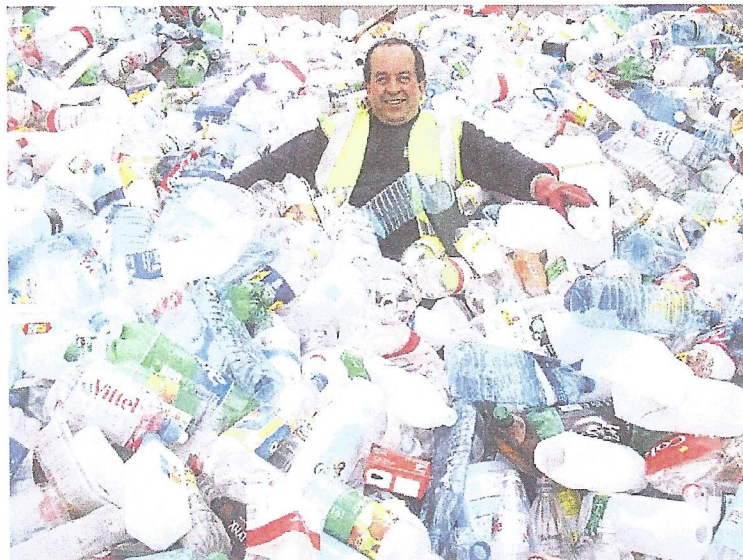


...AND IF YOU GENERATE MORE THAN YOU USE, YOU GET PAID FOR SELLING IT TO THE NATIONAL GRID!

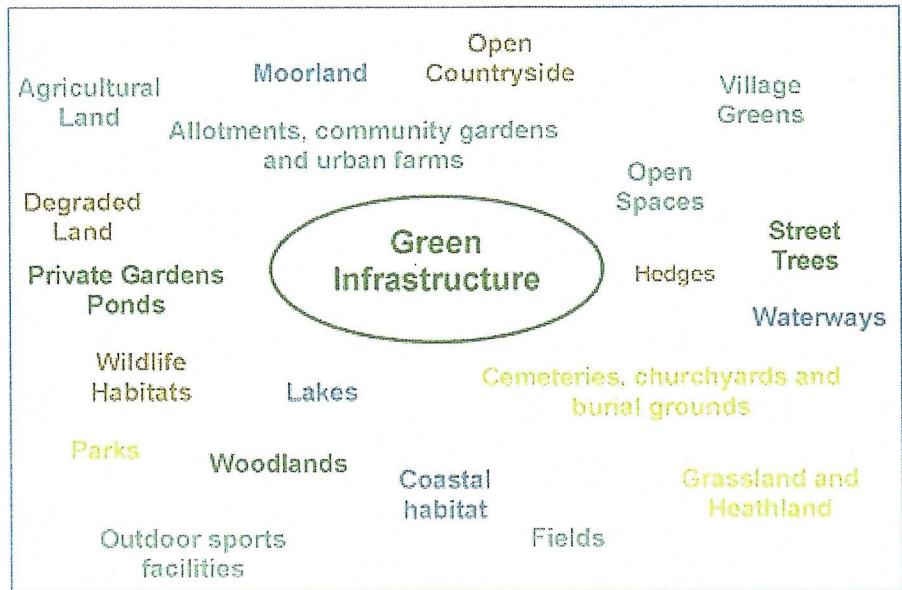
43/49

Recycling

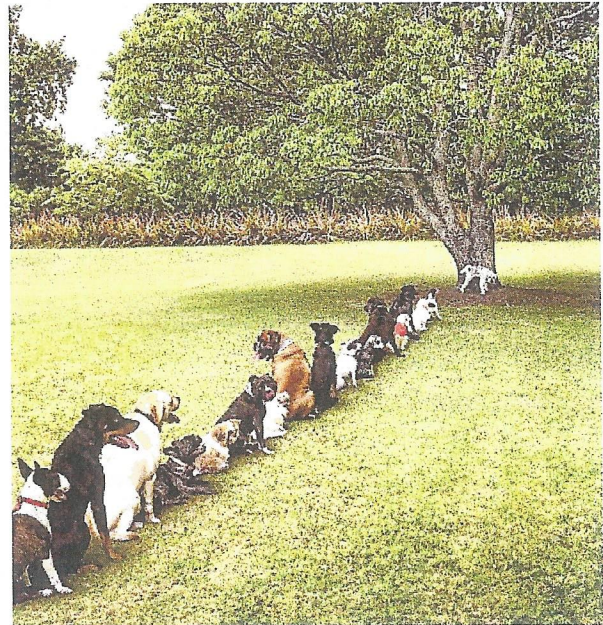
- Better recycling
- Recycling should be compulsory
- Use glass bottles instead of plastic
- Or recyclable plastic bottles
- Reduce the use of plastic/polystyrene packaging
- Use paper and cardboard bags not plastics
- Re-cycle clothes and clothes swaps
- Rainwater harvesting-used for flushing toilets etc.
- Cut down school waste
- More education on recycling
- Follow Modbury-no plastic bags
- Corn starch bags
- Competitions between the supermarkets and local businesses -who can recycle most?
- Encourage hotels to reduce laundry
- Reduce food waste



Greener towns and communities



- Kitchen garden for KCC
- Encourage 'grow your own'
- Vegetables with blemishes are OK
- Sell vegetables at school
- A green supermarket
- More farmer's markets
- Become a Green flag Eco School
- Links to programmes at Paignton Zoo
- Community composting
- Plant more trees (don't cut them down)
- Reed beds for drainage
- Outside classrooms
- Encourage greener and sustainable living make it fun



45/49

Potential projects

The discussion points and ongoing activities of the school identified a number of potential projects. These include:

More sustainable transport

- Awareness training for new car owners
- Car sharing
- Young people influencing bus routes and frequencies
- Walking buses to school
- Sustainable transport message board
- Developing the solar powered car project

Renewable energy

- Awareness training on the RE systems at school; such as the eco lab and heat pumps at the sixth form building
- Carbon reduction projects
- Energy saving projects through school

More recycling

- Re-cycling plastic bottle project (grant application submitted)
- Plastic bag free school
- Clothes swaps (one held during Comic Relief)

A greener town

- Kitchen garden at KCC (already started)
- Green Flag Eco-School (ongoing)
- Partnership with Paignton Zoo

Conclusions and next steps

The student's valuable contributions will be included in an action plan for the town. The Carbon Reduction Working Group is happy to continue to work with the school to develop a carbon reduction programme, projects and events.

The aims included in KCC's own Environmental Policy are commendable and set a good platform to develop further work. It is our view that there is considerable scope to broaden student's knowledge and would advise against any complacency.

...pursue policies that are to the advantage of the local environment and practices that can be applied in the wider community.

Students and staff should both encourage ENERGY CONSERVATION practice and an awareness that the process of energy generation often means using finite resources.

...recognise the need to REDUCE WASTE, RE USE resources and RECYCLE materials.....

A part of tutorial time is to be set aside to study particular environmental issues and concerns.

Extract from the KCC Environmental Policy

We would hope to encourage the school to promote sustainable lifestyles, and to consider ways to achieve carbon reduction within the curriculum and in extra-curricula activities.

Peter Sandover
2nd May 2011

47/49

Appendix 2: Recommended reading & weblinks

Sustainable living:

The Transition Handbook - from oil dependency to local resilience

- Published by: Green Books
- Author: Rob Hopkins

Transition in Action - an energy descent action plan

- Published by: Green Books ISBN 978-1-900322-85-0
- Authors: Jacqi Hodgson & Rob Hopkins

Ten technologies to fix energy and climate

- Published by: Green Profile ISBN 978-1-847652-48-5
- Author: Chris Goodall

How bad are bananas?

- Published by: Douglas & McIntyre
- Author: Mike Berners-Lee

Community planning for low carbon living

- A suite of resources including films, a resource pack and a website to support communities and groups that are 'planning for low carbon living' - mainly around energy use. www.planlocal.org.uk
- Published by: The Centre for Sustainable Energy

Energy efficient financing scheme

- A new scheme designed to provide flexible financing options to all types of organisations and business, seeking to lower their energy costs and make their operations more efficient.
- www.energyefficiencyfinancing.co.uk/Pages/home.aspx
- From: The carbon Trust in association with Siemens Financial Services

Local Food:

Making local food work: influencing consumer buying behaviour

- Publication commissioned by: Making Local Food Work
- <http://www.makinglocalfoodwork.co.uk>

Recently released CPRE (Campaign to Protect Rural England) report on access to local food

- <http://e-activist.com/ea-action/action?ea.client.id=21&ea.campaign.id=8285>

Transport:

Local transport white paper: *Creating growth, cutting carbon* (Jan 2011)

- <http://www.dft.gov.uk/pgr/regional/sustainabletransport/>

Renewable energy:

South Devon Coastal Renewable Energy Network

- <http://www.sdcren.btck.co.uk>

Sustainable & energy-efficient buildings:

Building for life; Commission for Architecture and the Built Environment

- Published by: The Design Council
- www.buildingforlife.org

The local development framework site allocation development plan document 2010

- Published by: South Hams District Council

The green guide to specification

- Published by: the Building Research Establishment

Sustainable communities: the potential for Eco-neighbourhoods

- Published by: Earthscan
- Edited by Hugh Barton



49/49